

*Trans-Cal Industries, Inc.
Model SSD120-100N-SDR
Serial Data Repeater*

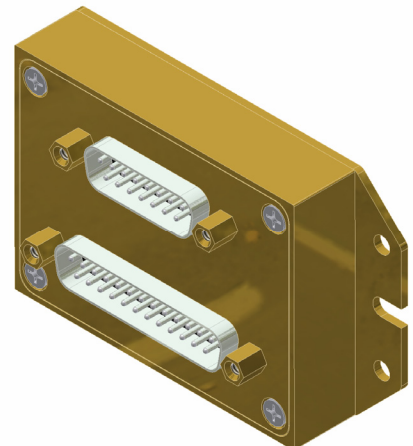
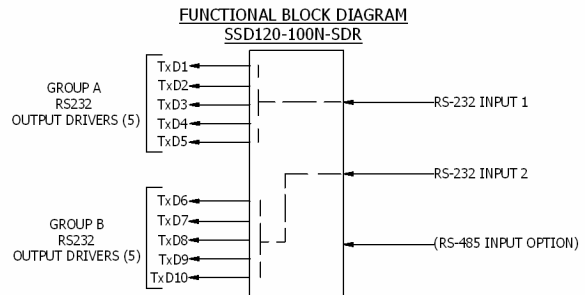
Drive up to Ten RS-232 Devices with a Single Input!

Designed to provide a fan-out of up to ten RS-232 compliant outputs from a single RS-232 input, the Model SSD120-100N-SDR is an all solid-state Serial Data Repeater providing a simple and robust means of transmitting serial data to multiple aircraft systems in a small package.

RS232 has become a popular format for transmitting serial data within the aircraft; but RS-232 is limited to one receiver per driver. The SSD120-100N-SDR is designed to fill the need for additional data distribution in the RS-232 format.

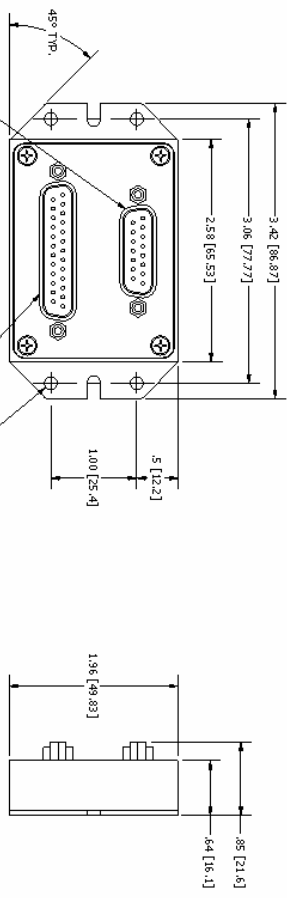
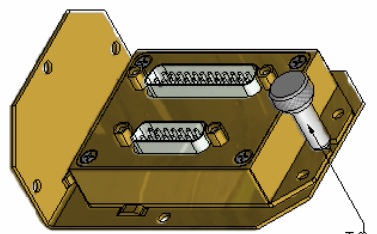
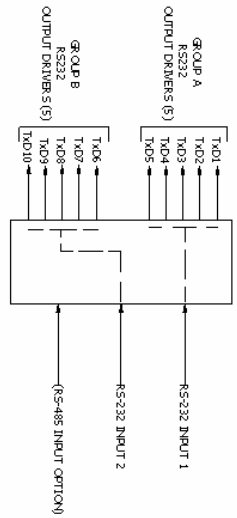
Featuring:

- Up to two RS-232 compliant data inputs and/or one RS485 input
- A fan-out of up to ten RS232 compliant output ports
- RS-232 Ports may be installer configured to transmit as one group of ten or two groups of five
- FAA TSO-C88a and EASA ETSO-C88a Approved
- Tested and Conforming to MIL-STD-704E and RTCA DO-160E
- Power, ground and data I/O are provided on an industry standard 25-pin D-Subminiature connector, while data distribution is controlled by jumpers on the 15 pin D-Subminiature connector.
- Operating Voltage +10 to +33Vdc
- Operating Current: 20mA (one output) / 60mA (ten outputs)
- Operating Temperature Range: -40° to +70°C
- Operating Altitude Range: -1200 to +100,000 feet
- Weight: 3 oz. (Mounting tray and knob adds 1 oz.)



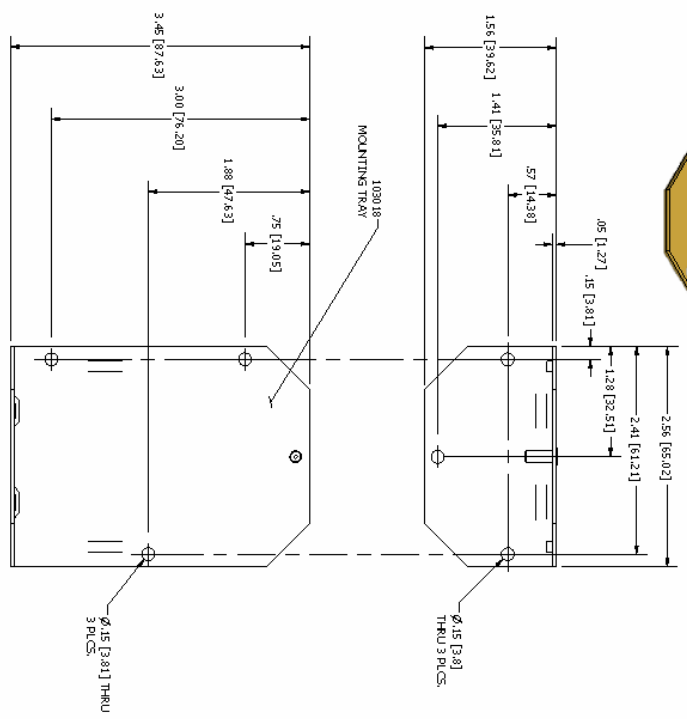
THIS DOCUMENT CONTAINS PROPRIETARY INFORMATION OF TRANS-CAL INDUSTRIES, INC. ANY REPRODUCTION OR DISCLOSURE OF THIS DOCUMENT WITHOUT THE WRITTEN PERMISSION OF TRANS-CAL INDUSTRIES, INC. IS EXPRESSLY PROHIBITED.

FUNCTIONAL BLOCK DIAGRAM
SSD120-100N-SDR



DA-15P DATA DISTRIBUTION	PIN	FUNCTION
1	TKO1	OUT
2	TKO2	OUT
3	TKO3	OUT
4	TKO4	OUT
5	TKO5	OUT
6	TKO6	OUT
7	TKO7	OUT
8	TKO8	OUT
9	TKO9	OUT
10	TKO10	OUT
11	RS485	IN (+)
12	RS485	OUT
13	RS485	IN (-)
14	RS485	OUT
15	DATA	COMMON

DB-25P SERIAL DATA CONNECTOR	PIN	FUNCTION
1	TKO1	GROUP A
2	TKO2	GROUP A
3	TKO3	GROUP A
4	TKO4	GROUP A
5	TKO5	GROUP A
6	TKO6	GROUP B
7	TKO7	GROUP B
8	TKO8	GROUP B
9	TKO9	GROUP B
10	TKO10	GROUP B
11	DATA	COMMON
12	DATA	COMMON
13	DATA	COMMON
14	DATA	COMMON
15	DATA	COMMON
16	DATA	COMMON
17	DATA	COMMON
18	DATA	COMMON
19	DATA	COMMON
20	DATA	COMMON
21	DATA	COMMON
22	DATA	COMMON
23	DATA	COMMON
24	DATA	COMMON
25	DATA	COMMON



REV	DESCRIPTION	DATE	APPROVED
A	PRODUCTION RELEASE	1/15/2009	J. Ferrero

4. OPERATING TEMPERATURE RANGE -40° TO +70°C
 3. OPERATING ALTITUDE RANGE -1100 TO +1100,000 FEET.
 2. APPROVED UNDER FAA TSO-C38A AND EASA ETSO-C38A.
 1. ALL GROUNDS ON THE SERIAL DATA PORT ARE INTERNALLY CONNECTED TO GROUND.

TOP ASSY NUMBER
103901

DRAWN
H. Smith
1/9/2009

CHECKED
M. Rembrink
2/3/2009

DESIGNED
J. Ferrero
10/17/2007

APPROVED
C. Herrera
2/6/2009

DATE
2/2/2009

SCALE
SCALE 1:1

UNITS
INCH (MM)

SHEET 1 OF 1

Trans-Cal Industries, Inc.
Van Nuys, CA 91406

Outline Drawing, SSD120-100N-SDR
Serial Data Repeater

SIZE
DRAWING
OUTLINE
SSD120-100N-SDR

REV
A

TOLERANCES:
UNLESS OTHERWISE NOTED
DIMENSIONS: Angles ±1°
HOLE DIA: ±.0010
DIA: ±.0015
HOLE DIA: ±.0015
HOLE DIA: ±.0015

THIRD ANGLE PROJECTION